

~~Patrick Kelly~~ begins at a corner of Hans Ulrichs Lot, thence by y^e same N. E. 130 perches to a post, thence by the same N. W. 41. to a post, thence N. E. 88 to a post, thence S. E. 127 perches to a post, thence S. W. 218 perches to the place of begining Containing 139 3/4 acres.

Surveyed April 7th, 1737

Nich^o Scull. —

Leas'd to John Robinson

Thomas Lynos begins at a corner marked tree on the West Side of Pertheornie Creek thence by a lot laid out to John Jacobs N. W. 22 perches to a post, thence by said lot S. W. 131 perches to a post, thence by a lot laid out to Philip Franke N. W. 135 perches to a post thence by a lot laid out to Patrick Kelly N. E. 218 to a post, thence S. E. 78 perches to a white oak, thence N. E. 51 perches to Pertheornie Creek, thence down the same to the place of Beginning Cont. 200 acres

Survey'd April 10th 1737

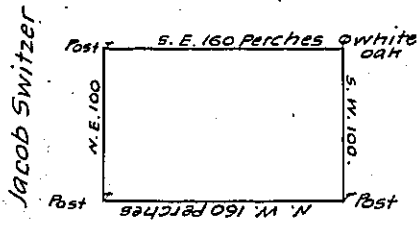
Nich^o Scull. —

Cunrad Hawes begins at a post a corner of Lodwicht Evalts lot, thence by y^e same S. E. 130 perches to a post, thence S. W. 124 perches to a post, thence N. W. 130 perches to a post, thence N. E. 124 perches to the place of Beginning Containing 100 acres

Survey. April 9th, 1737

Nich^o Scull. —

William Conally



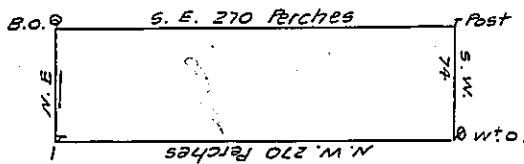
Hans Ulrich & Balzer Loar.

William Larget begins at a white oak a corner of Frederich Weavers land, thence S. W. 100 perches to a post thence by the Lots of Hans Ulrich and Balzer Loar N. W. 160 perches to a post thence by a lot of Jacob Switzer N. E. 100 perches to a post, thence by y^e said Frederich Weaver S. E. 160 perches to the begining. Containing

100 acres. Survey'd April 8th, 1737

Nich^o Scull. —

Lot laid out to George Painter

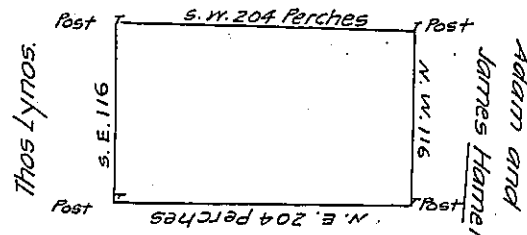


William Conally begins at a black oak in a line of Lodwicht Evalts land, thence by a lot laid out to George Painter S. E. 270 perches to a post, thence S. W. 74 perches to a white oak thence by Lots laid out to Jacob Ruffredt and Jacob Switzer N. W. 270 perches to a post, thence by lots laid out to Cunrad Hawes and Lodwicht Evalt 74 perches to the place of begining Containing

124 3/4 as. Survey'd the 10th of April 1737.

Nich^o Scull. —

John Jacobs



John Simmons

Philip Franke begins at a post a corner of John Jacobs's Lot thence by the lands of Adam Hammer and James Hammer N. W. 116 perches to a post, thence by John Simmons Lot N. E. 204 perches to a post, thence by Thomas Lynos's Lot S. E. 116 perches to a post, thence by a lot belonging John Jacobs S. W. 204 perches to the place of begining Cont. 147 3/4 acres

Survey'd April 12th, 1743

Nich^o Scull.

IN TESTIMONY that the above is a copy of the original remaining on file in the Department of Internal Affairs of Pennsylvania, made conformably to an Act of Assembly approved the 16th day of February, 1888, I have hereunto set my Hand and caused the Seal of said Department to be affixed at Harrisburg, this twentieth day of June 1911.

Henry Houch
Secretary of Internal Affairs.